



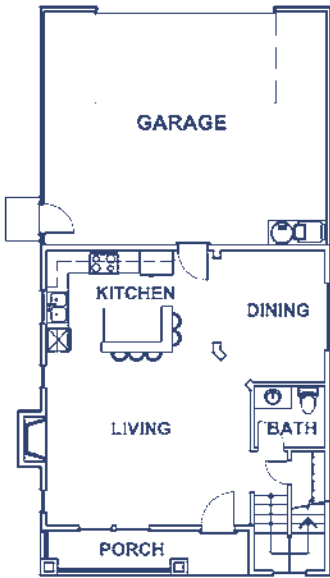
THE WATERFORD #1899

- 3 bedrooms + loft, 2.5 baths
- 1,899± square feet
- 5-piece master bath
- Overized 2-car garage
- Covered porch
- Kitchen island
- Open floor plan

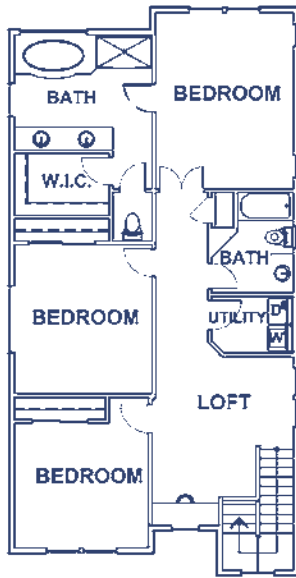


WATERFORD PLAN A

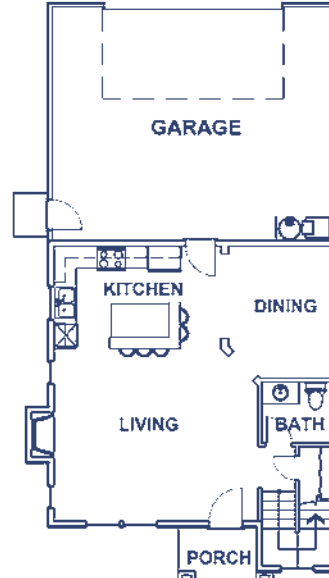
WATERFORD PLAN B



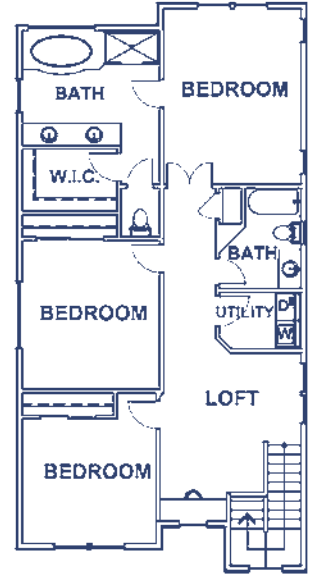
MAIN FLOOR PLAN A



UPPER FLOOR PLAN A



MAIN FLOOR PLAN B



UPPER FLOOR PLAN B

FLOOR PLAN #1899

Photos for illustration only. Specifications & finishes may change without notice.
Builder reserves the right to make changes.

07/01/08



Serving the South Puget Sound area since 1989

Villages at South Hill Sales Office: 253.848.0881 • www.HomesfromEpic.com

